

Great Days Out

Historic Houses and Great Estates

Discover a fascinating clock collection at Belmont and a 14th century fortified Manor House at Westenhanger Castle. Take time to stroll around the beautiful, colourful gardens of Godinton House and Beech Court Gardens. Head to Biddenden Vineyard for wine and cider tastings. Soak up theatrical history at Smallythe Place, enjoy a tour of nearby Chapel Down Winery and discover the stunning bluebells and wisteria at Hole Park Gardens.

Family Fun

Steam along in style to mediaeval Bodiam Castle with the Kent & East Sussex Railway and then enjoy the animals and all the fun activities at the Rare Breeds Centre.

Head out towards Appledore and the atmospheric Romney Marsh and take a trip on the Romney, Hythe and Dymchurch Railway – 'the world's smallest public railway'.

Shopping

Head for Ashford Town Centre and County Square Shopping Centre for top high street stores and to the Ashford Designer Outlet for brand names at big discounts. Browse in the many antique, gift and specialist stores in Tenterden and check out the villages for unusual shops. In Bethersden Stevenson Brothers create bespoke wooden rocking horses.



Leisure Time

Enjoy first class sporting facilities at the Julie Rose Stadium and Stour Centre. Golf lovers are spoilt for choice with 9 holes at London Beach and 18 at Tenterden. Learn about nature conservation and sustainability at the Singleton Environment Centre. Then for some sustenance try The Compasses Inn at Crundale, The Secret Garden at Mersham or Number 75, Dining Room & Wine Bar at Tenterden.

History and Heritage

Discover Ashford's history at the borough museum, see corn being ground at Willesborough Windmill and learn about farming methods at Brook Agricultural Museum. Visit Stocks Windmill, Kent's tallest post mill and enjoy the views from Cranbrook's Union Mill. See history come alive at Woodchurch and Tenterden Museums and view Morgan three-wheeled cars at Rolvenden.



Tourist Information

For further information about the Ashford and Tenterden area contact the Ashford Tourist Information Service:

2nd Floor, Ashford Gateway Plus, Church Road, Ashford, Kent TN23 1AS Tel: 01233 330316 tourism@ashford.gov.uk www.ashford.gov.uk

Produced and published by the Ashford and Tenterden Tourism Association - 01233 330345. Designed and printed by Typecast Colour - 01892 838382.

Visiting in 2012

While Ashford and Tenterden couldn't be 'better placed' for visitors wishing to take advantage of all the special events being staged during the summer of 2012, it's also an ideal base to discover the very 'best of the Garden of England'.

Set amongst beautiful 'Darling Buds of May' countryside and picturesque villages, a host of beautiful gardens and houses, National Trust properties, nostalgic steam railways, award-winning vineyards and small unique attractions are waiting to be discovered.



Ashford's high-speed 'javelin' train service means that central London is just 38 minutes away, while the Olympic Park is just over half an hour away. Benefit too, from the area's wealth of top quality accommodation ranging from first-class hotels, cosy B & Bs and self-catering in traditional oast houses to modern holiday parks.

Ashford offers all the best of a flourishing market town, with its rich mix of historic buildings, but yet all the vibrancy of a modern international gateway, with Ashford's International Eurostar station lending a truly continental ambience.

Tenterden, known as the 'Jewel of the Weald', is a typical English country town. At its heart is the attractive high street full of antique shops, tea rooms, inns and specialist shops with wide tree-lined greens distancing you from the world going by.



2012 Ashford & Tenterden



Family Fun
Stay
Heritage
Visit
Gardens
Eat



www.ashfordtourism.co.uk

Self Catering

APPLEDORE, KENARDINGTON, WOODCHURCH – Ashby Farms Ltd ★★ TO ★★★★★
Place Farm, Kenardington, Ashford, TN26 2LZ
Tel: 01233 733332
www.ashbyfarms.com



CRUNDALE – Farnley Little Barn ★★★★★
Farnley, Denwood Street, Canterbury, CT4 7EF
Tel/Fax: 01227 730510
E: farnleylittlebarn@supaworld.com



KINGSNORTH – Broadhembury Caravan & Camping Park ★★★★★
Steeds Lane, Kingsnorth, Ashford, TN26 1NQ
Tel: 01233 620859
www.broadhembury.co.uk



SHADOXHURST – Eversleigh Woodland Lodges ★★
Hornash Lane, Shadoxhurst, Ashford, TN26 1HX
Tel: 01233 731013
www.eversleighwoodlandlodges.co.uk



TENTERDEN – Ransley Barn Cottages ★★
Ransley Barn, Ashford Road, High Halden, Ashford, TN26 3LL
Tel: 01233 850613
www.ransleybarncottages.co.uk



WYE – Mulberry Cottages
The Granary, Bridge Street, Wye, Ashford, TN25 5ED
Tel: 01233 813087
www.mulberrycottages.com



Hotels

ASHFORD – Ashford International AA★★★★
Simone Weil Avenue, Ashford, TN24 8UX
Tel: 01233 219988
www.qhotels.co.uk



ASHFORD – Eastwell Manor AA★★★★
Eastwell Park, Boughton Lees, Ashford, TN25 4HR
Tel: 01233 213000
www.eastwellmanor.co.uk



ASHFORD – Holiday Inn Ashford North ★★★★★ SILVER AWARD
A20, Maidstone Road, Hothfield, Ashford, TN26 1AR
Tel: 01233 713333
www.holidayinn.com



TENTERDEN – Little Silver Country Hotel ★★★★★ SILVER AWARD
Ashford Road, St. Michaels, Tenterden, TN30 6SP
Tel: 01233 850321
www.little-silver.co.uk



TENTERDEN – London Beach Country Hotel, Golf Club & Spa ★★
Ashford Road, Tenterden TN30 6HX
Tel: 01580 766279
www.londonbeach.com



All of the hotels and some of the attractions also provide excellent restaurant, bistro, tea room and café facilities with a good selection of delicious local 'Produced in Kent' fare on offer – www.producedinkent.co.uk

Camping & Caravanning

ASHFORD – Godinton House & Gardens
Godinton Lane, Ashford, TN23 3BP
Tel: 01233 620908
www.godinton-house-gardens.co.uk



KINGSNORTH – Broadhembury Caravan & Camping Park ★★★★★
Steeds Lane, Kingsnorth, Ashford, TN26 1NQ
Tel: 01233 620859
www.broadhembury.co.uk



Eating Out

CRUNDALE – The Compasses Inn
Typically English 15th century pub. Excellent home cooked food, fine beers & wines, oak beams & cosy open fires. Ideal for families with its extensive mature garden. Occasional live music.
Tel: 01227 700300 www.compassesinn-crundale.co.uk



MERSHAM – The Secret Garden
On the beautiful Mersham Estate. Serving Lunch, Afternoon Tea & Dinner all year. Converted coach house & undercover terrace overlooks Victorian working kitchen garden where all our produce is grown. Courtyard offers little shops & cookery school.
Tel: 01233 501586 www.secretgardenkent.co.uk



TENTERDEN - Number 75, Dining Room & Wine Bar
Modern international dining experience, selection of fabulous menus, extensive range of wines. Enjoy intimate dinners for two, relax with friends & family, unwind with a drink over a light bite, sit on the terrace & enjoy a cocktail watching the world go by.
Tel: 01580 762075 www.number75.com



Bed & Breakfast

ASHFORD – Downsview Guest House ★★★★★ SILVER AWARD
Willesborough Road, Ashford, TN24 9QP
Tel: 01233 621391
www.ashforddownsview.co.uk



ELMSTED – Elmsted Court Farm ★★★★★ SILVER AND BREAKFAST AWARDS
Elmsted, Ashford, TN25 5JN
Tel: 01233 750269
www.elmsted-court-farm.co.uk



PLUCKLEY – Glebelands B & B ★★★★★
Station Road, Pluckley, Ashford, TN27 0QU
Tel: 01233 840089
www.bed-breakfast-pluckley-kent.co.uk



TENTERDEN – Collina House ★★★★★
5 East Hill, Tenterden, TN30 6RL
Tel: 01580 764852
www.collinahousehotel.co.uk



TENTERDEN – The Tower House
27 Ashford Road, Tenterden, TN30 6LL
Tel: 01580 761920
www.tower-house.biz



TENTERDEN – The White Cottage B & B ★★
Ashford Road, St Michaels, Tenterden, TN30 6SR
Tel: 01233 850583
www.thewhitecottagebedandbreakfast.co.uk





1 Biddenden Vineyards

Kent's oldest commercial vineyard producing award winning wines, ciders and juices. Open daily, free admission & tastings with free guided tours run on selected dates throughout the year. Please see website for further details.

Tel: 01580 291726
www.biddendenvineyards.com



2 Union Windmill, Cranbrook

Get blown away by the tallest Smock Mill in Britain. Six floors, great views, activities for children. Open 2.30pm - 5pm Saturdays and Bank Holidays April to September; Sundays and Wednesdays in Summer school holiday period.

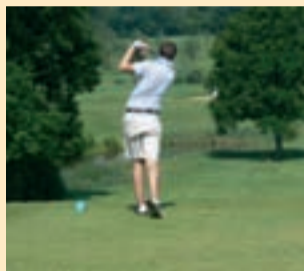
Tel: 01580 712984
www.unionmill.org.uk



3 Kent & East Sussex Railway

Relax and enjoy 10 1/2 miles of beautiful countryside in vintage steam & historic diesel trains. Enjoy cream teas & ploughman's lunches on board. Museum, gift shop, licensed restaurant & regular events. Col. Stephens' Museum - his life & light railways.

Tel: 01580 765155
www.kesr.org.uk



4 London Beach Golf Course

Complete range of golfing facilities within beautiful parkland landscape. Golf course, pitch and putt, mini golf, driving range. Restaurant open to public. Open to all ages and abilities.

Tel: 01580 766279
www.londonbeach.com



5 C.M. Booth Collection of Historic Vehicles

Private collection specialising in Morgan cars, 11 on display. 1904 Humber, 1929 Ford, 1929 Morris Van, 1936 Bampton caravan, cycles, motorcycles and motoring memorabilia.

Tel: 01580 241234
www.morganmuseum.org.uk



6 Hole Park

A less well known, but highly praised delightful private garden extending over 15 acres within parkland. Formal, meadow and woodland gardens with a friendly family atmosphere.

Tel: 01580 241344
www.holepark.com



7 Stocks Windmill

Kent's tallest post mill, built 1781. One mile from Wittersham. Local artefacts and history. Open by volunteers Easter Sunday/Monday, then Sundays/ Bank Holiday Mondays May to end of September afternoons.

Tel: 01797 270295
www.kent.gov.uk/windmills



8 Tenterden and District Museum

In a quiet location just off Tenterden High Street. The 19th century weatherboard building was a coach house and stables. Exhibits show the history of Tenterden and the Cinque Ports.

Tel: 01580 764310
www.tenterdenmuseum.i12.com



9 Ashford Town Centre

Shoppingly good! Colourful, historic market town, modern gateway to Europe. Lively, safe, accessible. Shopping and eating out for all tastes - Monday to Sunday.

You're always welcome here.
Tel: 01233 664410
www.ashford.towntalk.co.uk



10 County Square Shopping Centre

We've got more than just fashion in store at County Square. With fifty-eight shops, you'll discover a whole world of shopping - fashion, cameras, jewellery, shoes, toys, homeware, books, coffee shops and much more, all under one roof!

Tel: 01233 634001
www.countysquareshoppingcentre.com



11 Ashford Designer Outlet

Europe's most spectacular shopping destination offering over 70 high street and designer brands with discounts of up to 60% off recommended retail prices. Food court, children's play area and ample parking.

Tel: 01233 895940
www.ashforddesigneroutlet.com



14 Ashford Borough Museum

Find out more about the history of Ashford. Annual featured exhibitions. Open Monday - Saturday 10am - 1pm, April to end October. Special openings can be arranged. Free admission.

Tel: 01233 631511
www.ashfordmuseum.co.uk



15 Singleton Environment Centre

Enjoy a walk, learn about the environment or relax with a coffee or meal. Open seven days a week. Rooms available for hire for meetings, training and functions. Ashford's truly unique and sustainable venue.

Tel: 01233 666519
www.btcv.org/singleton



16 Godinton House & Gardens

Delightful Jacobean house. Wonderful carving, furniture, porcelain and contrasting decoration reflect a fascinating history. Set in 12 acres of beautiful gardens and surrounded by tranquil parkland. Homemade teas. Plant sales.

Tel: 01233 643854
www.godinton-house-gardens.co.uk



21 Belmont

Charming 18th century house set in delightful grounds. Belmont contains beautiful furniture, a wonderful collection of clocks and watches and a fine collection of paintings.

Tel: 01795 890202
www.belmont-house.org



22 Beech Court Gardens

Unique 10 acre garden for all seasons. Spring heralds a fine show of rhododendrons, azaleas & viburnums which give way to climbing roses in June and an impressive collection of blue and red hydrangeas in summer. Cosy oast house tea rooms.

Tel: 01233 740735
www.beechcourtgardens.co.uk



23 Willesborough Windmill

Built 1869. Victorian kitchen, parlour, garden. Barn with shop, refreshments. Heritage display. Open weekend afternoons April to end Sept plus Weds July & Aug. Guided tours £3 (concessions). Children welcome.

Tel: 01233 661866
www.willesboroughwindmill.co.uk



24 The Julie Rose Stadium

International athletics stadium, 28 station air-conditioned gym, children's parties, weddings, conference and meeting facilities.

Tel: 01233 613131
www.ashfordleisuretrust.co.uk



25 The Stour Centre

State of the art new leisure facility. Leisure pool, two fumes, raging river, interactive water features, teaching and 25m main pool, café. 88-station Contours Health Club - jacuzzi, sauna & steam room.

Tel: 01233 663503
www.ashfordleisuretrust.co.uk



12 Tenterden - 'The Jewel in the Weald'

Tenterden's charming High Street and adjacent passageways boast an extensive range of independent shops allowing visitors to experience shopping as it used to be. Ideal place for interesting gifts, crafts, books, clothes & antiques.

Tel: 01233 330316
www.tenterdentown.co.uk



13 Smallhythe Place

Early 16th century half-timbered house once belonging to Victorian actress Ellen Terry & containing her fascinating theatre collection inc. the newly restored & celebrated Beetle Wing Dress display. Beautiful cottage grounds featuring the Barn Theatre and café. Regular events.

Tel: 01580 762334
www.nationaltrust.org.uk



17 The Chapel Down Winery

Discover our award winning wines, enjoy the restaurant, herb garden and vineyard walks. Take a guided tour (seasonal), taste and learn how we grow vines and make wines. Entrance free.

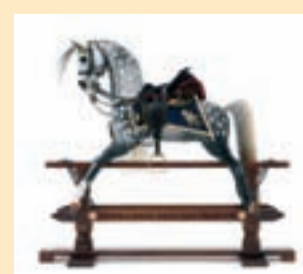
Tel: 01580 766111
www.chapeldown.com



18 Tenterden Golf Club (est. 1905)

Renowned throughout the southeast as a friendly golf club. An ideal venue for company events, society visits or for individual players simply wishing to sample the delights of the beautiful Kentish countryside.

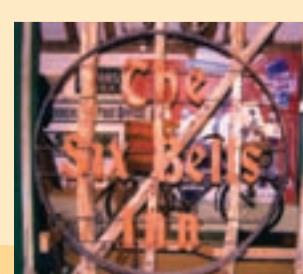
Tel: 01580 763987
www.tenterdengolfclub.co.uk



19 Stevenson Brothers

Stevenson Brothers, established in 1982, create bespoke wooden rocking horses to suit all ages, making them a much sought after family heirloom. Restorations of old and antique horses also undertaken.

Tel: 01233 820363
www.stevensonbros.com



20 Woodchurch Village Life Museum

Exciting new museum telling the story of Woodchurch, from the Stone Age to today. Open 10am - 4pm Easter to end of Sept on Fri, Sat, Sun & Bank Hols and weekends in winter. Please phone or check website for opening times.

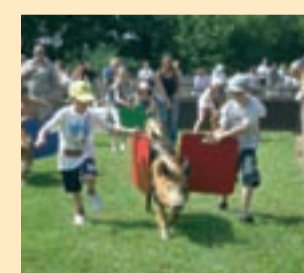
Tel: 01233 860240
www.woodchurchmuseum.com



26 Agricultural Museum, Brook

Superb Grade 1 mediaeval barn with wagons, reapers, ploughs and almost everything from the horse drawn age. Grade 2, largely intact oast house with hop equipment and many other items.

Tel: 01304 824969
www.agriculturalmuseumbrook.org.uk



27 Rare Breeds Centre

Fun, excitement & adventure at our friendly farm. Animals, falconry, indoor soft play area, woodland assault courses, seasonal butterfly tunnel, discovery garden. Seasonal pig racing, trailer rides, restaurant, paddling pool, walk through aviary and lots more.

Tel: 01233 861493
www.rarebreeds.org.uk



28 Westenhanger Castle

14th century fortified Manor House. 1000 years of history of occupation on site, Medieval Barns, reconstruction of Tudor kitchens, and replica of c1600 ship Discovery. Open Tuesdays only from mid April to mid Oct. 10am to 5pm.

Tel: 07984 132962
www.kentcastle.co.uk



29 Romney, Hythe & Dymchurch Railway

Kent's favourite tourist railway running between Hythe and Dungeness via Dymchurch and New Romney. Plus model railway exhibition, cafés, gift shops, picnic areas, playground and lots more!

Tel: 01797 362353
www.rhdr.org.uk

CHAPEL DOWN
VISIT ENGLAND'S PREMIER WINE PRODUCER

Our Wine and Fine Food Store is stocked with a fine selection of local and regional food to compliment our fantastic wines. The restaurant, Richard Phillips at Chapel Down promises a truly inspiring dining experience and the very finest cuisine.

- Guided tours of the vineyard and winery run April to October.
 - Group Tours are welcome by prior arrangement.
 - Explore the vineyards and herb garden or enjoy a sample of our award winning wines.

THE CHAPEL DOWN WINERY, TENTERDEN VINEYARD
Smallhythe, Tenterden, Kent TN30 7NG
Tel: 01580 766111
retail@chapeldown.com www.chapeldown.com

TENTERDEN ENGLAND

Kent & East Sussex Railway
TENTERDEN • NORTHIAM • BODIAM

England's finest rural light railway

The picturesque line weaves between Tenterden and Bodiam for 10 1/2 miles. Experience travel and service from a bygone age aboard beautifully restored coaches and locomotives dating from Victorian times.

Telephone 01580 765155, visit kesr.org.uk or our facebook page.

Supported by